

# LSD Deputy Report

## July 18 – August 1, 2012

Steve Suhring

## Summary

- Thanks go to Randy Michaud for covering
  - Family medical situation improved.
- PEPPo magnet tests completed.
- Inj. transverse emittance meas. postponed.
- Qweak laser table work started.
- C100 commissioning completed.
- FEL run ended.
- CHL 2K to 4K and beyond begun!
- OL04 cable rework started.
- 1R new plates installed.
- 2R stands and plates removed.
- 1S stands coming out.

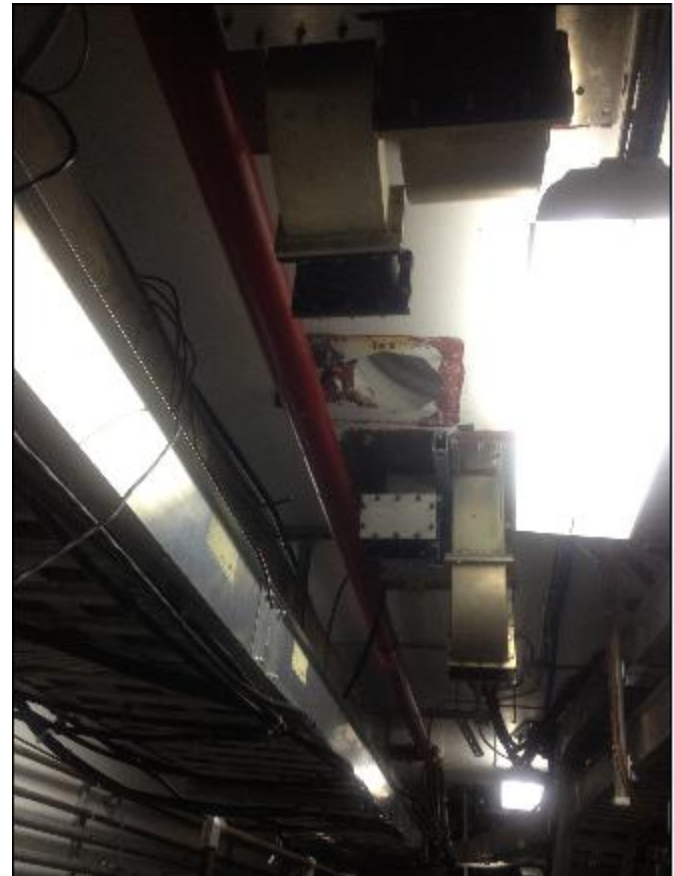
## Summary, cont.

- Arc1 dipoles installed.
- Arc 3 dipoles removed.
- 1R Shunt cables installed
- WArc 2A alignment (magnets to 12GeV locations) (almost done).
- Accelerator survey network ties completed.
- Hall C beamline removal well underway.
- Tagger movable wall started.
- Tunnel leak repairs started.



OL/OR/2S+ magnets

Prep for R100 cables  
at OL04





New 1R top and base plates

Arc10 BPM cables



	Sun	M	T	W	T	F	Sat
29	2012-07-15	16	17	18	19	20	21
Owl	LSD: Suhring	LSD: Michaud	LSD: Michaud e PEPPo MPA5D05 magnet	LSD: Michaud e PEPPo MPA5D05 magnet	LSD: Michaud e PEPPo MPA5D05 magnet	LSD: Michaud	LSD: Michaud
Day	e C100-4 2L22 comm	FEL Run PGun cathode heat & act e PEPPo MPA5D05 magnet e NL viewer convrs e NLinac PSS 12GeV config e S&A: 1R bolts e 2R stands out  e WArc 2A align e Hall B S&A Preshower Calor. in e Pull Vac Intlk cables between e Trnk Acc vlans-Hall netwrk e DHCP netwrk security config Tour: teachers e 1330 Inj PSS Check	FEL Run PGun cathode heat & act e PEPPo MPA5D05 magnet e NL viewer convrs e NLinac PSS 12GeV config e S&A: 1R bolts e 2R stands out  e WArc 2A align e Opswall maint e Pull Vac Intlk cables between West e Injector mini-checkout needed for	FEL Run  e PEPPo MPA5D05 magnet e NL viewer convrs e NLinac PSS 12GeV config e 2S plates out e 2R stands out e S&A: 1R bolts e WArc 2A align  e WArc vac cable	FEL Run  e PEPPo MPA5D05 magnet e NL viewer convrs e NLinac PSS 12GeV config e 2S plates out e 2R stands out e S&A: 1R bolts e WArc 2A align  Tour: AAAS Fellows  e WArc vac cable	FEL Run  TS INJ PSS Trips e NL viewer convrs e NLinac PSS 12GeV config e 2S plates out e 2R stands out e S&A: 1R bolts e WArc 2A align  e WArc vac cable  Tour: thin film wrkshp	
Swing	e C100-4 2L22 comm	e PEPPo MPA5D05 magnet e C100-4 2L22 comm e SL23/24/25 RF controls tests e Trans Emit Meas 130keV beam	e PEPPo MPA5D05 magnet e C100-4 2L22 comm e SL23/24/25 RF controls tests e Trans Emit Meas 130keV beam	e PEPPo MPA5D05 magnet e C100-4 2L22 comm e SL23/24/25 RF controls tests e Trans Emit Meas 130keV	e C100-4 2L22 comm e SL23/24/25 RF controls tests e Trans Emit Meas 130keV		
30	2012-07-22	23	24	25	26	27	28
Owl	LSD: Michaud	LSD: Suhring	LSD: Suhring	LSD: Suhring	LSD: Suhring	LSD: Suhring	LSD: Suhring
Day		FEL Run e Qweak Laser Table work e 0L04 port ODH mon e NL viewer convrs e NLinac PSS 12GeV config e WArc vac cable e WArc 2A align e S&A tunnel to topside transfer 0R/2R Removal  Tour: NuFact I Tour: NuFact II	FEL Run e Qweak Laser Table work  e NL viewer convrs e NLinac PSS 12GeV config e WArc vac cable e WArc 2A align e S&A tunnel to topside transfer 0R/2R Removal  e 2L27Port ODH Mon Arc1A inst	FEL Run e Qweak Laser Table work 0L04 stone drop e NL viewer convrs e NLinac PSS 12GeV config e WArc vac cable e WArc 2A align e S&A NL baseline 0R/2R Removal e 1R plates  Arc3A remv e 12GeV ITV inst e Open Exit Stair doors	FEL Run e Qweak Laser Table work e 0L04 cable demo e NL viewer convrs e NLinac PSS 12GeV config e WArc vac cable e WArc 2A align e S&A NL baseline 0R/2R Removal e 1R plates SL27 Stone drop e vlan security  CHL trip	FEL Run e Qweak Laser Table work e 0L04 cable demo e NL viewer convrs e NLinac PSS 12GeV config e WArc vac cable e WArc 2A align e ISR1/3C12 as-found e 1S+ stands out e 1R plates e SL27 DC cables e Tunnel leak repair e XC Beamline removal	
Swing		e SL23/24/25 RF controls tests	e SL23/24/25 RF controls tests	e SL23/24/25 RF controls tests	e SL23/24/25 RF controls tests	e SL23/24/25 RF controls	
31	2012-07-29	30	31	01	02	03	04
Owl	LSD: Suhring	LSD: Suhring	LSD: Pilat e Open Exit Stair doors	LSD: Pilat e XC G0+ girder removal	LSD: Pilat e XC G0+ girder removal	LSD: Pilat e XC G0+ girder removal	LSD: Pilat
Day		FEL Run  e NLinac PSS 12GeV config e WArc 2A align e WArc vac cable e 1S+ stands out  e SL27 DC cables e XC Beamline removal e Tunnel leak repair	FEL Run Ends  e NLinac PSS 12GeV config e WArc 2A align e WArc vac cable e 1S+ stands+ out e S&A XC target e S&A XD cryo pipe e WArc PSS Gate mods e XC Beamline removal e Tagger wall inst e Tagger wall inst e Sprinkler header mod.	CHL 2K to 4K LHe dewar u-tube e NLinac PSS 12GeV config e WArc 2A align e 1S+ stands+ out e S&A 1R baseplates e 2L24/25 rad meas e 2A15 girder vent e CHL#1 Cooling Twr CHL CT mob. e Tagger wall inst e iocin1 from 3.13 to 3.14 e PSSestamp to V 7-3 e Decomm SL PSS e 67-IU-1 repair air conditioning	LHe transfer e NLinac PSS 12GeV config e WArc 2A align e 1S+ stands+ out e S&A 1R baseplates e SL27 DC cables  e CHL#1 Cooling Twr e XC Beamline cleanup e Tagger wall inst e iocin1 from 3.13 to 3.14	LHe transfer e NLinac PSS 12GeV config e WArc 2A align e 1S+ stands+ out e S&A 2R bolt layout e SL27 DC cables e B-com+ lifting plates e CHL#1 Cooling Twr e XC 535MCM cable removal e Tagger wall inst e PSS NE Stub gate remv	LHe transfer         e iocin1 from 3.13 to 3.14
Swing		e Qweak Laser Table work	e Qweak Laser Table work				